

# DATA MING TECHNIQUES- LEVERAGING USING THE ANALYTICAL MODEL BASED ON SENTIMENT INDICES TO AFFICASIOUSLY REPORT AND PREDICT MULTIPLE CRIMES

Sahil Kapoor

Amity Int School

Sec-6, Vasundhara, Ghaziabad

---

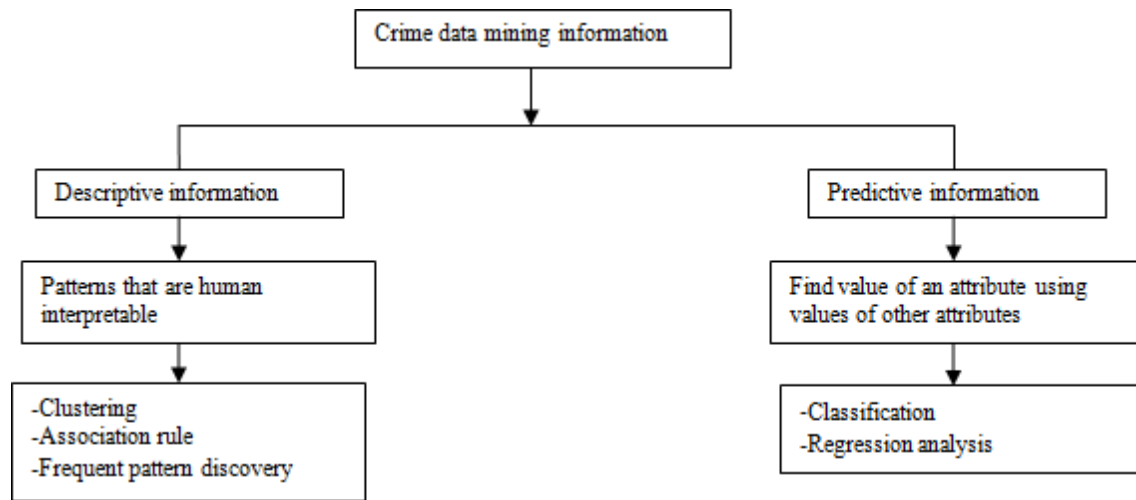
## ABSTRACT

*Crimes are a social disturbance and cost the general public to a great degree from numerous points of view. Any examination that can help in breaking down and solving crime faster pays for itself criminal information mining has the limit of removing accommodating information and hid precedents from the generous bad behavior instructive records. The crime data mining challenges are getting to be fortifying open doors for the coming years. Since the writing of crime information mining has expanded energetically as of late, it winds up obligatory to build up a diagram of the cutting edge. This methodical study revolves around criminal information mining systems and developments used as a piece of past examinations. The current work is assembled into different groupings and is presented using observations. This paper also exhibits a couple of troubles related to criminal information inquire about.*

**KEYWORDS:** *Crime data mining; crime data analysis; systematic review; systematic study.*

## I. INTRODUCTION

Bad behavior is one of the overwhelming and concerning highlights in any overall population. The development of bad behavior rates is one of the explanations behind the alarm. Law prerequisite workplaces, information associations, and police keep up bad behavior databases [1,2]. The bad behavior data be researched to get bits of information and to expel gaining from it. A couple of examinations have discovered a number of techniques to separate the bad behavior data [3]. The wrongdoing information investigation can give the wrongdoing insights of a district, nation or world [4]. The law prerequisite associations decisions for accomplishment topics by accepting the diverse parameters that affect the infringement [5]. A. Wrongdoing information mining data Crime information mining data can be of various sorts has appeared in Figure 1.



**Figure 1. Crime data mining information types**

### A. Motivations and Objectives

This examination is finished remembering the true objective to research the bad behavior data mining. Frameworks progressions which are relevant. This examination is required to mark it possible to recognize bad behavior data mining advancements, strategies and troubles have been peddled in the previous study and recognize openings. This investigation is for effectively evaluating the negative performance data mining strategies, issues and challenges, and headways used as a piece of existing examinations. The results may assist the researcher with getting an audit of bad behavior information extraction and highlight the investigation gaps The data extraction benchmark is beached by requests, for instance, machine learning [4], artificial mental ability [5], probability [6] and bits of knowledge [7].

## II. RELATED WORK

The examination approach is made out of three phases. The primary stage includes the exploration of works identified with wrongdoing information mining and examination. The next step is worried about setting up an arrangement conspire depicted in Section three. The third step includes the introduction of the outline of looks into in offense data extraction and inspection and the story of definite writing survey.

(1) RQ.1: What are the distinctive procedures for the wrongdoing information mining and examination?

To answer this inquiry Section III portrays the recurrence of distributions relating to the different systems around there.

(2) RQ.2: What are the innovations utilized in offensive info extraction and investigation?

To request to have the capacity to reply to the inquiry, the advancements utilized in offensive info extraction & investigation.

(3) RQ.3: What are the different difficulties engaged with wrongdoing information mining and investigation?

To answer this inquiry pie diagram in Section III portrays the different difficulties and issues included. The exploration is instated with these questions and afterward pursues the means portrayed.

### **A. Search Strategy and Screening**

Infringement in India are blended up at an aggravating rate, and culprits are picking interesting activities to give them. Day by day papers, Web online diaries, et cetera is regularly stacked with various bad behavior events. A part of the puzzled bad behaviors that occurred in India in the latest couple of years is determined here.<sup>12</sup> An educator was beating the life out of by his own understudies in Ujjain, Madhya Pradesh. A gathering of nine taxi drivers from Gurgaon, Haryana, scoured and butchered no under 35 people in the wake of offering them lift. Raucous crowd stripped and assaulted a young woman in full broad permeability at the Gateway of India, Mumbai, on the New Year eve. Days after the horrendous Nithari killing, 4 crumbled gatherings of children were recovered from the surrendered godown in Punjab. Explicitly trapped young women in the Kashmir valley are up 'til now endeavoring to adjust up to damage. These events reveal how infringement is transforming into a creating scourge in India and have transformed into a Some skilled factors that win in India for sheer augmentation in bad behaviors are poverty, movement, joblessness, disillusionment, starvation, the absence of training, degradation, nepotism, swelling, et cetera. Impact of such bad behaviors is that today people living in India currently focus their eyes toward bad behavior examination associations and security workplaces to check and control infringement. At this moment, physical examination by associations has the probability to negligence and dismissal the solid bad behavior features.

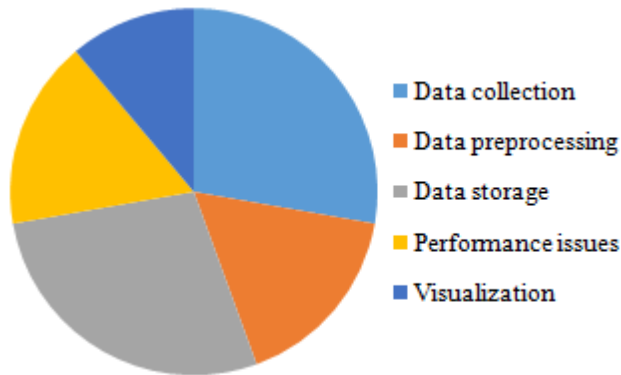
## **III. CRIME DATASET SOURCES WITH CRIME TYPES**

With the AIM to find the correct moments of familiarity and effective examination, it is important to perceive accessible information wellsprings of offensive and the different sorts of wrongdoing [23].

### **A. Crime data mining and analysisData sources**

#### **1. Lawsstories**

Lawsstories, for example, FIRs containing data about the wrongdoing and suspect.



**Figure 2. Research papers Challenges**

Police personal compose FIRs on papers which is unstructured in design. FIRs is dependable hotspots for gathering wrongdoing information.

## 2. Priorexaminationreports

a) In the wake of perceiving a once in the past arraigned suspect, the police ask for past examination records of the proposed suspect. These records come in substance, photo, video, CCTV video archives. money related parity, monetary records, phone call, email send-get records, quantifiable reports, witness and setback clarifications and lawful advocate decrees [25,26].

b) Insight reports Intelligence organizations keep up data about the hoodlums. Knowledge organizations of India are Research and Analysis (RAW), Intelligence Bureau (IB), Narcotics Control Bureau (NCB) [27,28].

c) Open source insight discoveries Open source knowledge discoveries are extricated from the web, web search tools, long range informal communication locales (Facebook, Twitter, LinkedIn). This data is in unstructured information design [29,30].

d) Police capture records When cops capture speculates then their capture records are kept up. These records are for the most part in social organization or content arrangement [31].

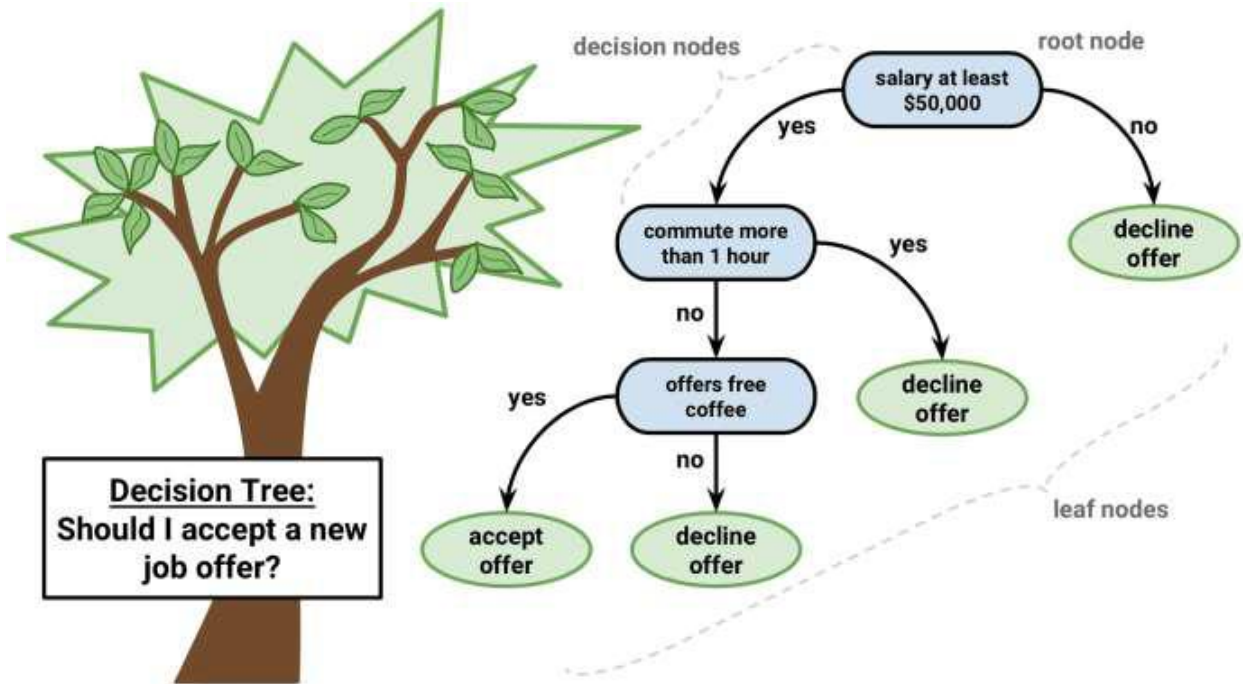
### A. Type of crimes

Some kind of wrongdoing, for example, illegal conflagration and petty criminal offenses concern police at the city, state and national level [32,33]. Other wrongdoing composes, for example, psychological warfare, cybercrimes are explored by nearby offices and additionally national and worldwide organizations [34].

#### IV. PROPOSED SOLUTION

We connected the order on the database. In which we utilized the choice tree calculation and Apriori calculation that distinguished the information and order the information likewise. Choice Tree Algorithm Pseudocode

1. Put the highest normal for the datasheet at the base of the tree.
2. Split the readiness set into subsets. Subsets should be made to such an extent that each subset contains data with a comparative motivating force for a property.
3. Rehash organize 1 and stage 2 on each subsection till the fact that the moment that you find leaf centers in every one of the parts of the tree.



#### V. TESTING RESULTS

we use preprocess tab to choose file

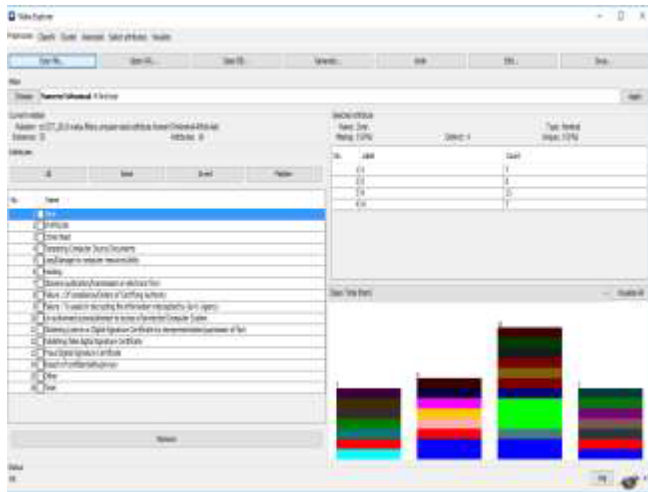


Figure 4: Preprocessing Tab

No we have all the rundown of properties and their qualities as demonstrated as follows

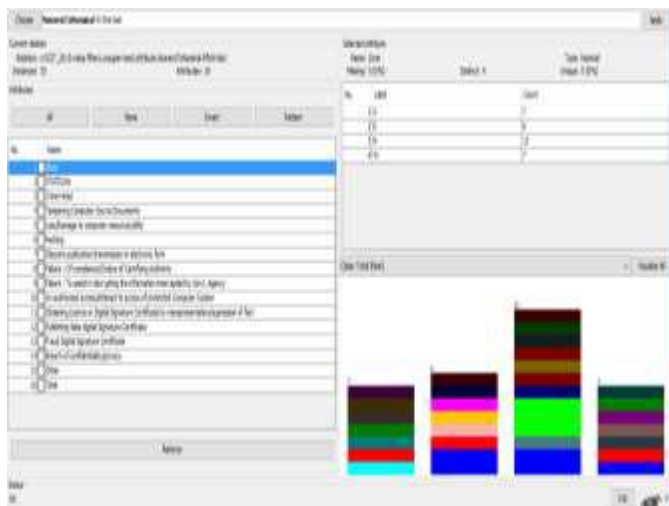


Figure 5: features List and their outputs

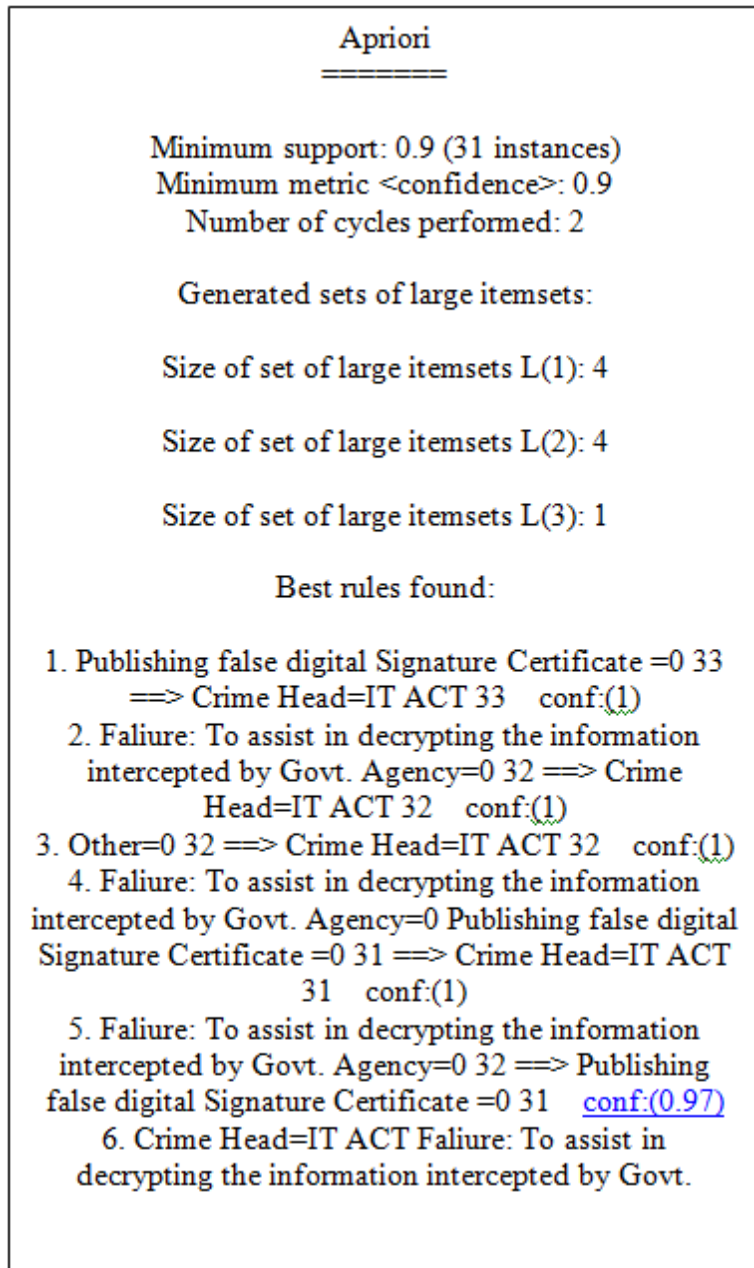


Figure 2 Apriori Algorithm Output

## VI. CONCLUSION

Wrongdoing data extraction and inspection is an active domain of research. The outcomes of this examination might help new customers in accepting the extent of open bad behavior data mining techniques and advances. Wrongdoing data mining can be used to give whole wrongdoing estimations of a particular district or domain that offers favorable position to the overall

population by striking the organization and law usage associations to grasp the diverse causes that extension the wrongdoing rates. The organization and law prerequisite workplaces could take healthier decisions for healthier living of the citizens that regularly mean bundle of lives

## **VII. REFERENCES**

- [1] UbonThongsatapornwatana, "A Survey of Data Mining Techniques for Analyzing Crime Patterns," in 2016Second ACDT, IEEE, 2017.
- [2] A.Bagula, S.BermanO.Isafiadea, "A Revised Frequent Pattern Model for CrimeSituation Recognition Based on Floor-Ceil Quartile Function," Procedia CS, vol. 55,Elsevier, pp. 251-260, 2015.
- [3] W.Chung,J.jieX,G.Wang, Y.Q,MichaelC.H.Chen, "Crime Data Mining: AGeneral Framework and Some Examples," Computer, IEEE, pp. 50- 56, April 2014.
- [4] S. Srisuk P. Thongtae, "An Analysis of Data Mining Applications in Crime Domain," IEEE 8th ICCIT Workshops, IEEE, pp. 122-126, 2014
- [5] Bhargava, R., Dr, Singh, P., & Sangwa, R. S. (n.d.). ANALYSIS OF CRIME DATA USING DATAMINING ALGORITHM. IJESRT, 7(2), 675-681.