

YOU ONLY LOOK ONCE REAL TIME OBJECT DETECTION USING ML

***Prof. Tushar Zombade, **Mr. Shubham Khetmalis, **Miss. Rekha Gupta**

**Assist. Prof., **Students*

Electronics and Telecommunication Engineering, RMDSSOE, India

ABSTRACT

Object detection is a computer technology related to computer vision and image processing that deals with detecting instances of semantic objects of a certain class (such as humans, buildings, or cars) in digital images and videos.^[1] Well-researched domains of object detection include face detection and pedestrian detection. Object detection has applications in many areas of computer vision, including image retrieval and video surveillance.

Keywords - yolo (You Only Look Once) , DPM(deformable parts models)

INTRODUCTION:

Humans glance at an image and instantly know what objects are in the image, where they are, and how they interact. The human visual system is fast and accurate, allowing us to perform complex tasks like driving with little conscious thought. Fast, accurate, algorithms for object detection would allow computers to drive cars in any weather without specialized sensors, enable assistive devices to convey real-time scene information to human users, and unlock the potential for general purpose, responsive robotic systems. Current detection systems repurpose classifiers to perform detection. To detect an object, these systems take a

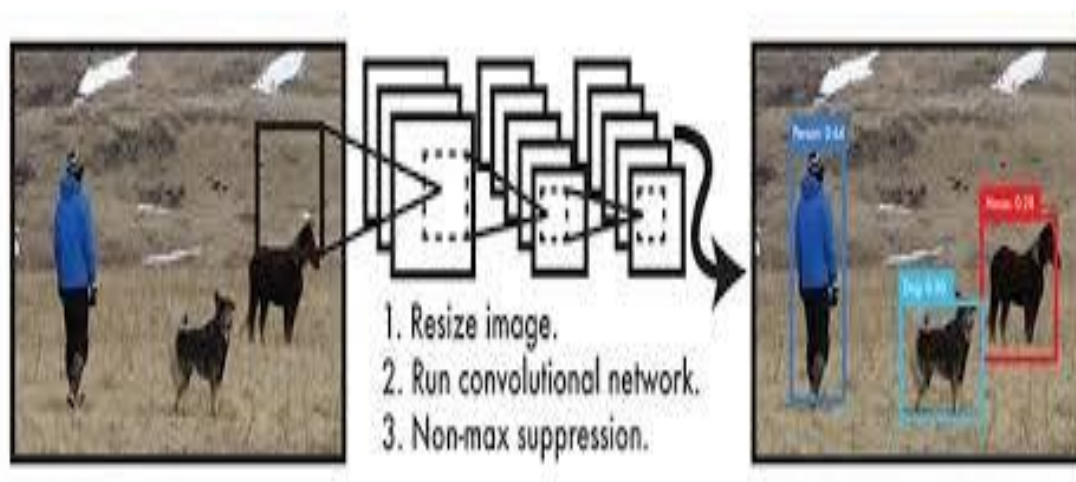


Figure 1:

Figure 1: The YOLO Detection System. Processing images with YOLO is simple and straightforward. Our system (1) resizes the input image to 448×448 , (2) runs a single convolutional network on the image, and (3) thresholds the resulting detections by the model's confidence classifier for that object and evaluate it at various locations and scales in a test image. Systems like (DPM) use a sliding window approach where the classifier is run at evenly spaced locations over the entire image.

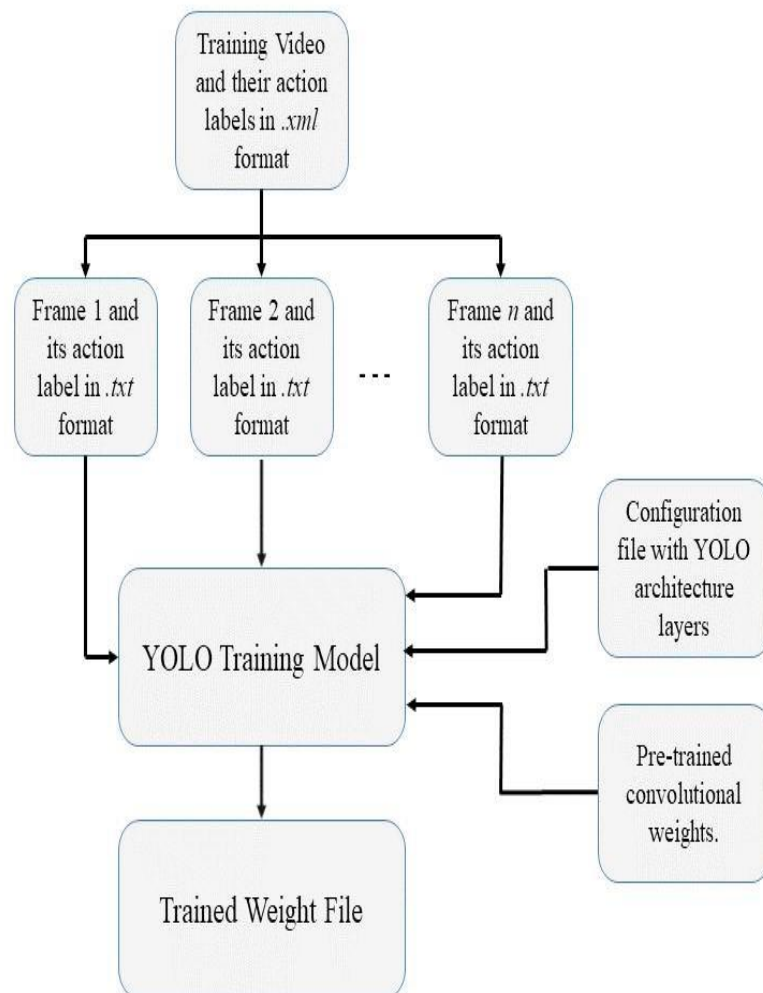


Figure 2:

FUTURE SCOPE

Every object class has its own special features that helps in classifying the class – for example all circles are round. Object class detection uses these special features. For example, when looking for circles, objects that are at a particular distance from a point (i.e. the center) are sought. Similarly, when looking for squares, objects that are perpendicular at corners and have equal side lengths are needed. A similar approach is used for face identification where eyes, nose, and lips can be found and features like skin color and distance between eyes can be found.

CONCLUSION

It is widely used in computer vision tasks such as image annotation,^[2] activity recognition,^[3] face detection, face recognition, video object co-segmentation. It is also used in tracking objects, for example tracking a ball during a football match, tracking movement of a cricket bat, or tracking a person in a video.

REFERENCE

1. Dasiopoulou, Stamatia, et al. "Knowledge-assisted semantic video object detection." IEEE Transactions on Circuits and Systems for Video Technology 15.10 (2005): 1210–1224.
2. ^ Ling Guan; Yifeng He; Sun-Yuan Kung (1 March 2012). *Multimedia Image and Video Processing*. CRC Press. pp. 331–. ISBN 978-1-4398-3087-1.
3. ^ Wu, Jianxin, et al. "A scalable approach to activity recognition based on object use." 2007 IEEE 11th international conference on computer vision. IEEE, 2007.
4. ^ Jump up to:^{a b} *Bochkovskiy, Alexey (2020). "Yolov4: Optimal Speed and Accuracy of Object Detection". arXiv:2004.10934[cs.CV].*